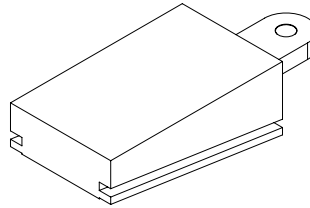
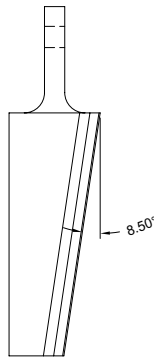
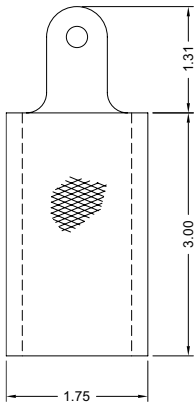
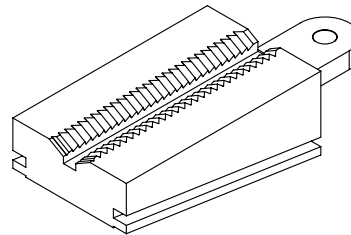
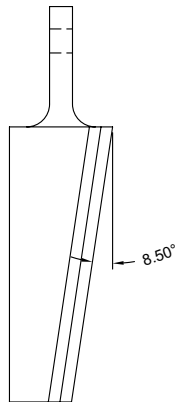
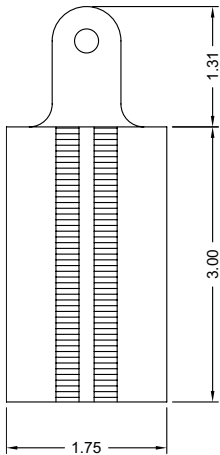


▶ TINIUS OLSEN STYLE: K-GRIPS 1.75" FLAT JAWS FOR 12,000LB. MACHINE CAPACITY



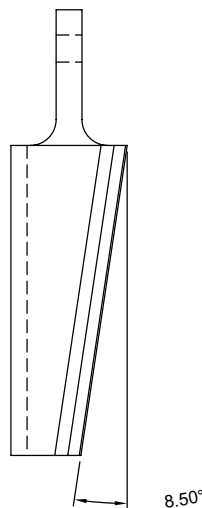
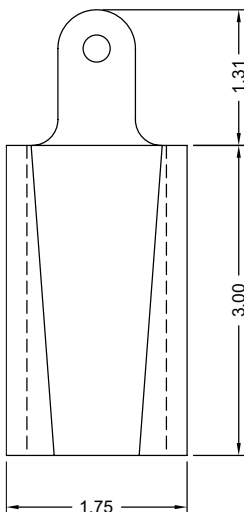
| BASE NO. | DESCRIPTION |
|--------------|--------------|
| TOX12175IFN1 | 1-¾ FLAT JAW |

▶ TINIUS OLSEN STYLE: K-GRIPS 1.75" VEE JAWS FOR 12,000 LB. MACHINE CAPACITY



| PART NO. | DESCRIPTION | WIRE RANGE |
|--------------|-------------|-------------|
| TOX12175IVN1 | 1-¾ VEE JAW | .50 - 1.00" |
| TOX12175IVN2 | 1-¾ VEE JAW | .25 - .50" |

▶ TINIUS OLSEN STYLE: K-GRIPS 1.75" INSERT HOLDER FOR 12,000LB. MACHINE CAPACITY



| PART NO. | DESCRIPTION |
|--------------|---------------|
| TOX12175IHN1 | INSERT HOLDER |

*SEE PAGE 16 FOR INSERT

